



WINDOW, DOOR & LANTERN MAINTENANCE GUIDE



Thank you for choosing Sheerline aluminium products for your home.

Here's a quick guide of how to maintain and clean our products to ensure years of trouble-free use and enjoyment. By following these simple steps, you can be confident that you will get the most out of your new windows and doors, and that they will continue to operate perfectly for years to come.

Sheerline's aluminium products have a powder coated finish which needs minimal upkeep, but following these instructions will ensure they keep looking their best.

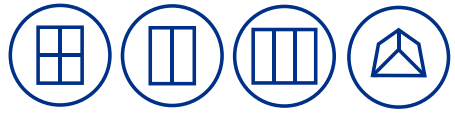
Contents

General Cleaning	3
Casement Windows	4
Tilt & Turn Windows	5
Single & French Doors	6
Bi-Folding Doors	7

Important: Please exercise all due care and attention when cleaning and maintaining your Sheerline windows and doors, in particular when installations are above ground floor.

General Cleaning

We recommend the following for all products including lanterns:



1.



Clean the inside and outside of frames and handles from top to bottom once every 3 months

2.



Use warm, soapy water and a soft, lint free cloth

3.



Avoid using any chemicals or abrasive cloths as this could damage the powder coated finish

4.



Dry them using a soft, clean cloth

5.



Inside & outside of the glass should be cleaned more frequently as required

6.



Use a standard household glass cleaner and a soft, lint free cloth

Casement Windows



1. Maintenance



Clean away any dirt or debris from the hinge or pivots, sliding shoe and track

2.



Add a small amount of lubricant at each pivot point and locking part*

3.



Wipe away any excess liquid with a tissue

4.



Check the tightness and security of all fixings, tightening as required

5.



Use a light machine oil on moving handle parts, but not the lock

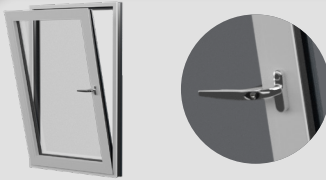
***PLEASE NOTE:**

All hinges and locks should be lubricated every 1-2 years to ensure continued smooth operation - using a suitable 3-in-1 light machine oil. Solvent sprays such as WD40 aren't suitable as they can damage the metal. So choosing the correct product is very important to ensuring your windows operate correctly.

Tilt & Turn Windows

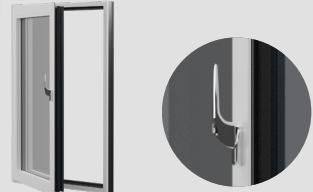


1. Operation



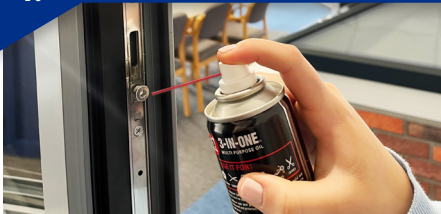
Turn the handle 90° to tilt the window for ventilation

2.



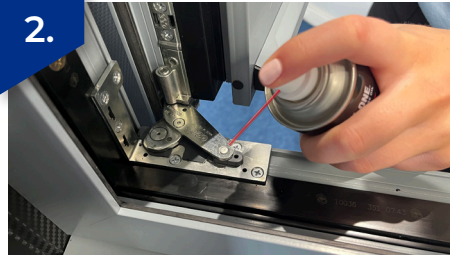
Return window to the closed position before turning the handle 180° to open the window inwards

1. Maintenance

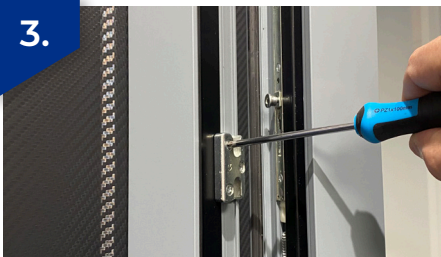


Follow steps 1 to 4 of the window hardware maintenance instructions but remember to lubricate the additional locking and hinge points that are present on a tilt and turn window including along the top and bottom of the window

2.



3.



Check the tightness and security of rail & keeps

4.



Use a light machine oil on moving handle parts, but not the lock

Single & French Doors

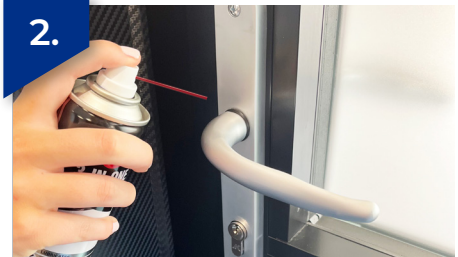


1. Maintenance



Clean away any dirt or debris from the hinges and threshold

2.



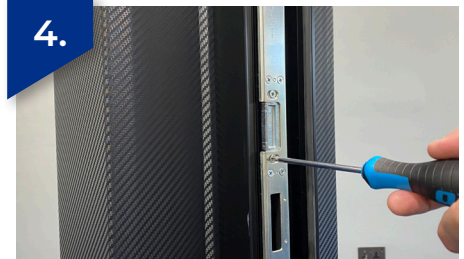
Use a light machine oil on moving handle parts, but not the lock cylinder

3.

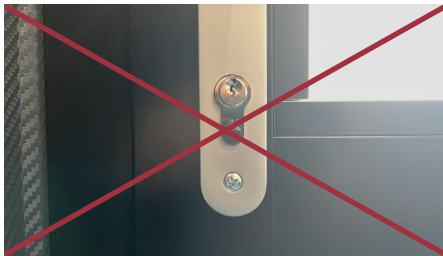


Lubricate moving parts of the lock mechanism using a suitable 3 in 1 light machine oil, wiping away any excess

4.



Check the tightness and security of all fixings, tightening as required



Do not routinely lubricate lock cylinder*

*However if key operation becomes stiff, lubricate using a silicone graphite or Teflon based spray only

Bi-Folding Doors

*PLEASE NOTE:

Bi-folding doors should not be operated by children.



1. Operation



To avoid mishandling, always fold back each door sash fully before opening the next section*

2.



Ensure doors are held in place via the magnets when open

1. Maintenance



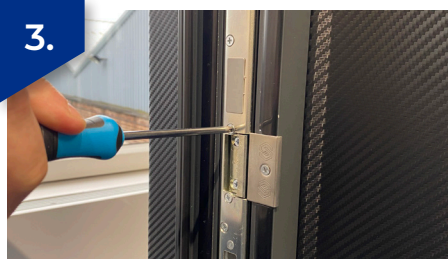
Once you've followed the instructions on page 6, wipe away any dirt or debris from the track to ensure the smooth operation of the rollers

2.



Lubricate the wheels as required using a suitable 3 in 1 light machine oil, wiping away any excess

3.



Check the tightness and security of all fixings, tightening as required

4.



Use a light machine oil on moving handle parts, but not the lock cylinder



If you follow these simple steps, you'll ensure your Sheerline products look pristine for longer and continue to operate perfectly, and remain within warranty.

Please note that products installed in coastal, exposed, urban or industrial areas can require significantly more cleaning to ensure they stay looking good and opening correctly, so it's worth checking to see if this will affect you.

We hope you enjoy your new Sheerline aluminium products.